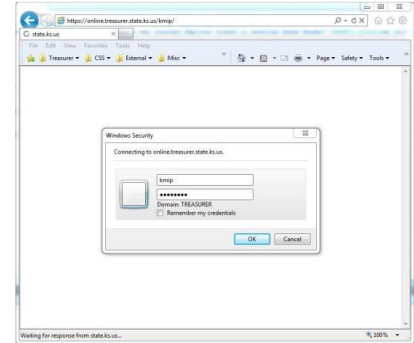


Kansas Municipal Investment Pool (KMIP) KMIP Log In Instructions

We recommend using the latest version of Microsoft Edge or Google Chrome.

- Go to KMIP Website: <https://online.treasurer.state.ks.us/kmip>
- You will be presented with a gray window/box. Enter as follows:
User Name: kmip
Password: pmibkmip
If you are asked to enter Domain, leave this field blank.

You will then be directed to the main KMIP login page.



- On the main KMIP login page enter as follows:
 - Your Operator ID (Your e-mail address)
 - Password (Your current password should work....if it doesn't please see instruction below under Forgot Your Password!)

You are now logged on to the KMIP System.



Forgot Your Password!

If you forget your password, enter your Operator ID next to “Enter your operator ID” and click the “Reset” button. **MAKE SURE TO READ THE ENTIRE PAGE YOU GET AND FOLLOW ALL INSTRUCTIONS!** You will be provided with a temporary password and will be sent an email with a link to re-validate your account. **MAKE NOTE OF THIS PASSWORD AS IT WILL NOT BE INCLUDED IN THE E-MAIL.**